

63M-Meter • Truck-Mounted Concrete Boom Pump



Model Overview

• Vertical Reach	204'	(63m)
• Horizontal Reach	190' 6"	(58.1m)
• Depth Reach	149' 6"	(45.6m)
• Unfolding Height	42' 7"	(13m)
• Front Outrigger	Swing Out	
• Rear Outrigger	Swing Out	

Outrigger Loads • Front and Rear

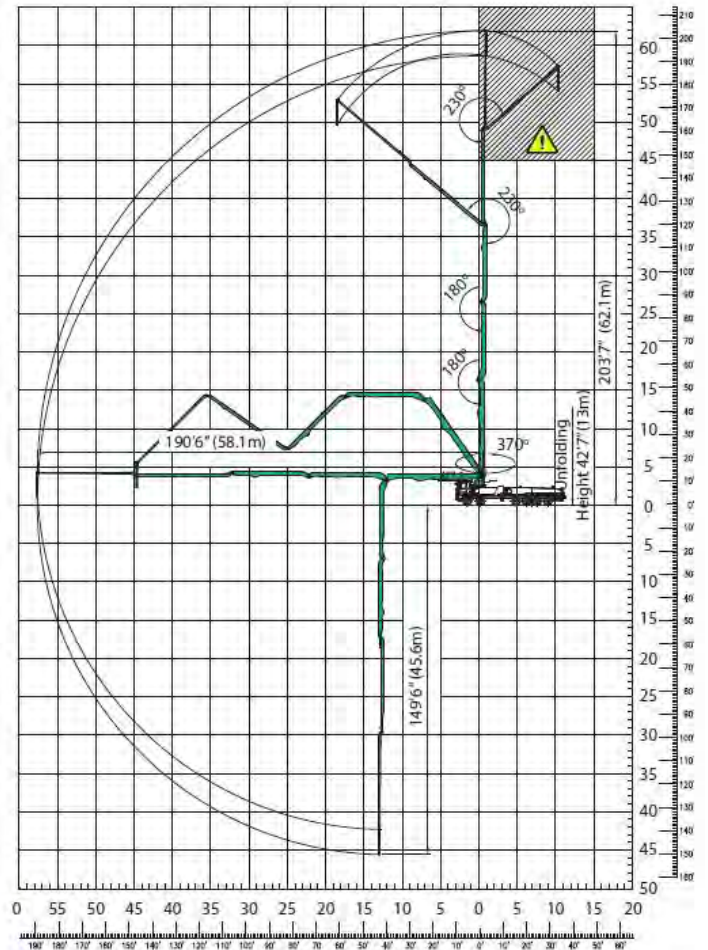
FRONT

94,800 lbs
430 kN

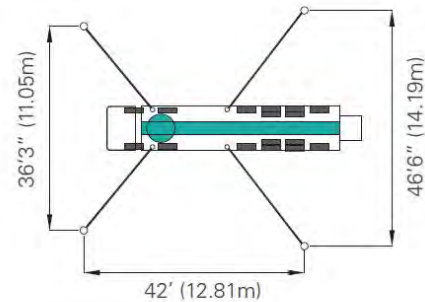


REAR

88,200 lbs
400 kN



Don't use in caution area



Front outrigger type X(Diagonal) Extension
Rear outrigger type Swing-out

